



DOORS - BI PARTING  
SAME SIDE

REVISIONS			
REV	DESCRIPTION	DATE	BY

☒ IN-LINE ☐ OPP.

© LOWER, UPPER

	BI-PARTING	DRYWALL CONSTRUCTION
		MASONRY CONSTRUCTION
HOISTWAY	FLOOR LOADING	PLAIN STEEL -- PRIMED
DOORS	COUNTER LOADING	STAINLESS STEEL -- #4

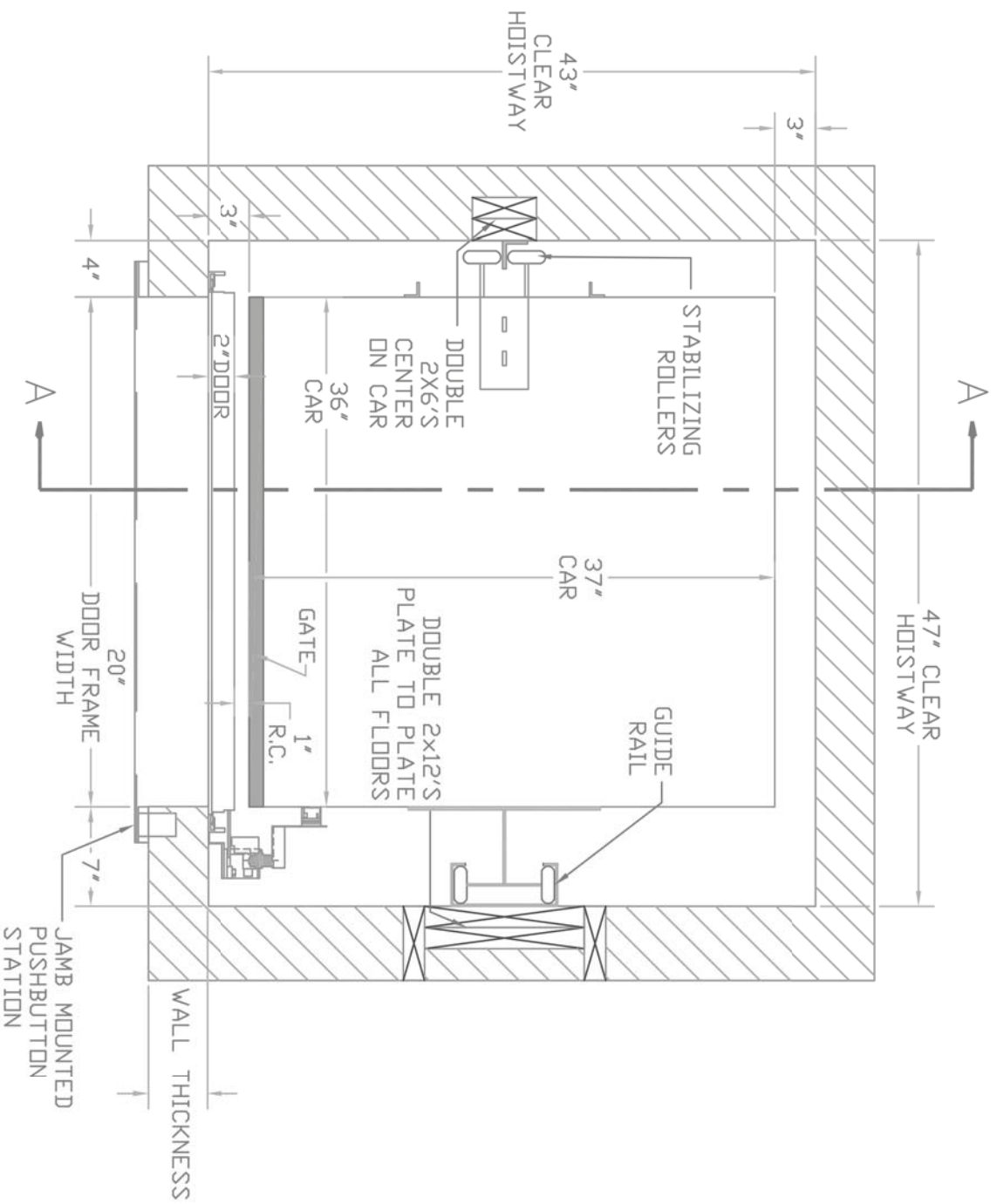
	<input checked="" type="checkbox"/>	EMERGENCY RELEASE
	<input type="checkbox"/>	

✕	HG-1 SINGLE CONTACT DOOR LOCK & CONTACT NEMA 1
	HG-2 DOUBLE CONTACT INTERLOCK NEMA 1

WALL MOUNTED 24V PUSHBUTTON STATIONS: 3  
☒ NON-ILLUMINATED ☐ ILLUMINATED  
 BUTTONS: ☒ 1 ☒ 2 ☐ 3 ☐ 4 ☐ 5

CAR GATE		BIRCH WOOD	<input checked="" type="checkbox"/>	ALUMINUM
	<input checked="" type="checkbox"/>	SLIDE-UP	<input checked="" type="checkbox"/>	BY: Nationwide lifts
ACCESS DOOR		PLAIN STEEL		STAINLESS STEEL - #4
		WOOD		BY OTHERS

DUMBWATER CAN BE INSTALLED THRU ROUGH OPENING  
HOWEVER INSTALLATION IS EASIER IF THE BOTTOM FLOOR  
DOOR WALL IS LEFT OFF UNTIL UNIT IS INSTALLED.



REINFORCED WALL: THE RAIL WALL MUST BE REINFORCED WITH DOUBLE 2X12 PLANKS AS SHOWN ON THE DRAWINGS. THE MACHINE AND RAIL SYSTEM REQUIRES THESE 2X12 PLANKS FOR SUPPORT.

MACHINE ROOM: MACHINE ROOM MAY BE LOCATED WITHIN THE HOISTWAY ON THE BOTTOM FLOOR OR IN A CLOSET ADJACENT TO THE HOISTWAY (BEHIND THE RAIL WALL). THE MACHINE ROOM MUST HAVE A LOCKABLE ACCESS DOOR. THIS DOOR MUST REMAINED LOCKED AT ALL TIMES.

APPROVED BY:

OPENING: SAME SIDE

DWG NO.	-----
---------	-------

DATE APPROVED:

SHEET

1 OF 2

DATE.

10/26/00

JOB NAME:

CUSTOMER:

SHIP TO:

APPROVED BY:

DATE APPROVED:

TITLE: DUMBWATER SECTION ELEVATION "A-A"

OPENING: BI-PARTING

SHEET 2 OF 2

DWG NO. RST FB2

DATE: 10/21/09

